

PAVMASTER

- - - - - by GILCREST



PavMaster 8140

Weight: 15,900 lbs	Engine: Cummins QSF 2.8T4F 74 HP
Length: 160"	Quiet Paver operation with Insulated Exhaust
Width: 102"	High Efficiency Electric over Hydraulic System
Height: 83"	Paving Thickness: 0" - 6"
Screed Heat: Propane	Paving Width: 8' - 14'
Screed Main Wear Plate: 5/16" Hardox 450 Bolt On	Screed Ext. Wear Plate: 1/4" Hardox 450 Bolt On
Manual with Power Depth Mat Thickness	Extension Mounted Screed Augers
9 Ton Wide Throat Hopper w/ Shut Off Gates	Two Speed Steel Tracks w/ Bolt on Pads that have hydraulic track tension and Fail Safe Brakes

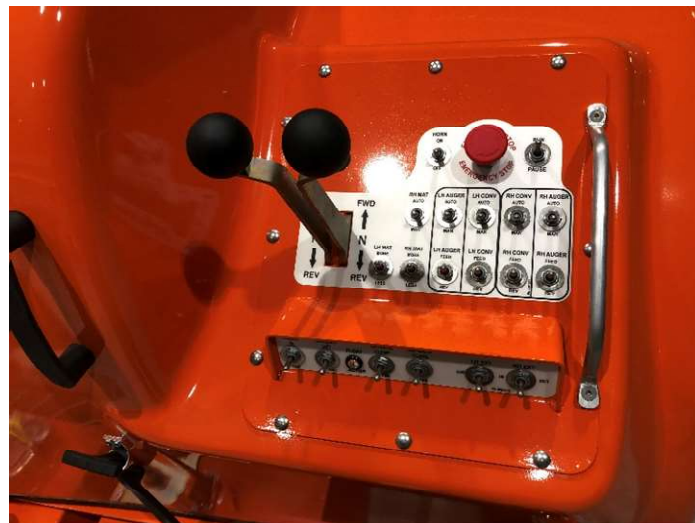


LH Main Operators Station

The controls on the PavMaster 8140 have been ergonomically designed for the operator. The EDC steering control on the 8140 has been designed so the operator does not need a steering control switch to instruct the controller which handles to read. The operator can go seamlessly from the LH to RH side.

RH Operators Station

The RH operators station give you full control of all paving functions.



Hood Design

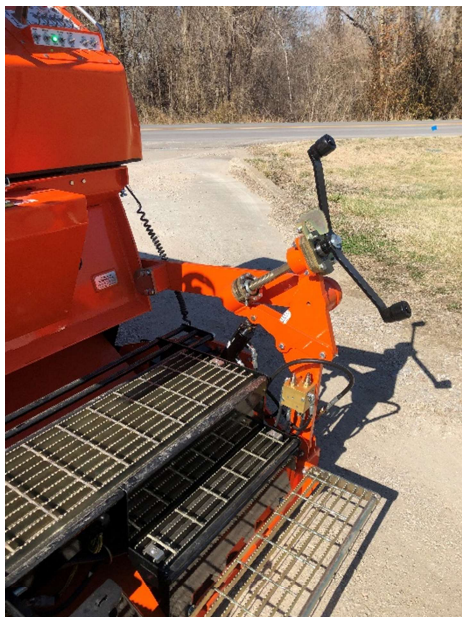
The fiberglass hood offers the operator comfort by reducing the amount of engine noise and heat. Fiberglass helps dampen the noise levels as compared to steel shrouds.



8140 Screed

The screed on the PavMaster 8140 can pave a path 8-14ft at a thickness of 0"-6". The screed can also 3" crown or up to a 2" invert.

The extension mounted screed augers allows the 8140 to feed the material out to the end for higher production throughput.



Screed Controls

The screed depth can be controlled with a manual screw as well as with the hydraulic adjusting cylinder. The standard hydraulic adjustment allows for the easy attachment of automation when required.

Screed Plates

The PavMaster 8140 screed comes with bolt on wear plates for the main as well as the extensions. The main screed is made from 5/16" Hardox 450 and the extensions from 1/4" Hardox 450. The insulated screed box is heated with two propane burners.



Wide Slat Conveyor

The PavMaster 8140 is all about production. One of the major features of this machine is the ability for it to feed the material. The open throat will allow the material to freely flow to the screed allowing you to get the material on the ground. The conveyors operate independently to feed material when it is needed.



Self-Adjusting Tracks

12" wide Urethane Grouser style tracks give the PavMaster 8140 the tractive effort it needs to push the trucks. The tracks are hydraulic self-adjusting to aid in the longest track life possible. We all know there are times when we must "hot track" onto the mix. The rock guards are another feature on the PavMaster 8140 to help extend the life of the tracks.

JMG Equipment Company
509 East Second Street
Holden, MO 64040
Ph: 816-732-5543
Fax: 816-732-5544
Email: sales@jmgequipment.com

PAVMASTER
by GILCREST